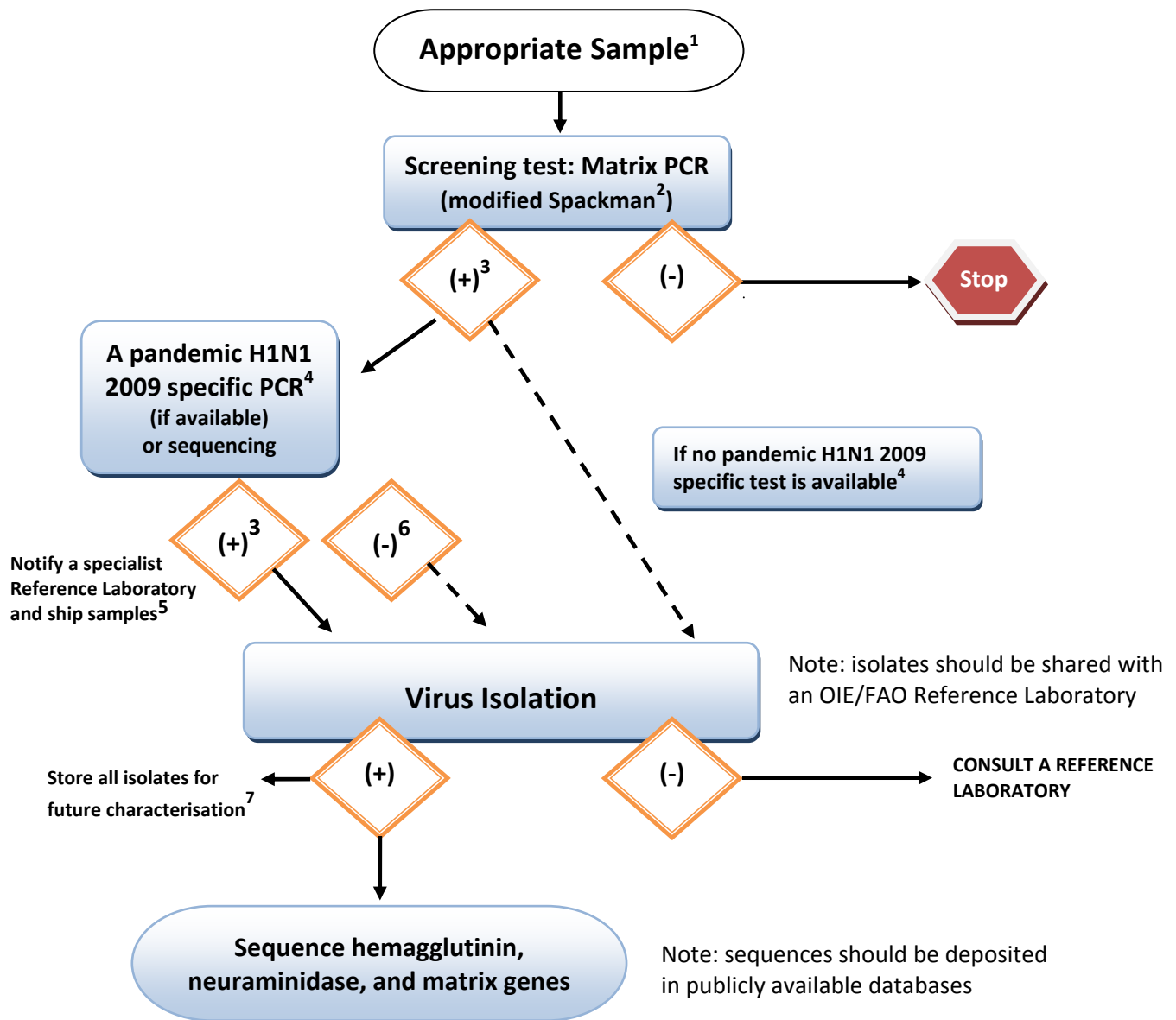


# OFFLU interim guidance on detecting pandemic H1N1 2009 in pigs: laboratory testing algorithm

Originally designed for use in the USA by National Veterinary Services Laboratory (NVSL) and the National Animal Health Laboratory Network (NAHLN). Kindly reproduced and modified for OFFLU with their permission.



1 Nasal swabs from clinically affected animals. Lung tissue at necropsy from suspected cases.

[http://www.oie.int/eng/normes/mmanual/2008/pdf/2.08.08\\_SWINE\\_INFLUENZA.pdf](http://www.oie.int/eng/normes/mmanual/2008/pdf/2.08.08_SWINE_INFLUENZA.pdf)

2 Adapted Matrix PCR protocols will increase test sensitivity for pandemic H1N1 2009 in pigs; for guidance please contact an OFFLU listed Reference Laboratory <http://offlu.net/OFFLU%20Site/8thMay.pdf>

3 If the test results for any sample cross the threshold, they are considered positive.

4 Protocols must be adapted to the regional context, and will be dependant on the other influenzas with which pigs may be infected in that region. **If in doubt please contact your Reference Laboratory.** Virus isolation (VI) should be attempted from PCR positive specimens to provide an adequate global collection of viruses in circulation – the strategy for this will depend on the situation in the region. If VI cannot be done adequately locally the samples should be sent to a Reference Laboratory.

5 Contact one of the OFFLU listed Reference Laboratories and provide the following information a) Test results, b) Laboratory internal referral number and c) Courier tracking number.

**Sample shipment:** Samples should be refrigerated and shipped on ice packs and shipped in accordance with international guidelines for sample shipment.

[http://www.oie.int/eng/normes/mmanual/2008/pdf/1.1.01\\_COLLECTION.pdf](http://www.oie.int/eng/normes/mmanual/2008/pdf/1.1.01_COLLECTION.pdf)

<http://www.fao.org/ag/againfo/programmes/en/empres/AH1N1/docs/SampleShipmentGuidanceSwine.pdf>

6 A subset of these samples may be tested for further characterisation depending on the type of surveillance strategy being implemented by your National Veterinary Services. If no PCR differentiation test is available virus isolation and sequencing will be required.

7 **Isolate storage and shipment:** Isolates should be frozen at -70C or colder. You may consider sending these samples to a Reference Laboratory.

**Note: If you have any queries please contact one of the listed OFFLU Reference Laboratories or the OFFLU Secretariat ([offlu@oie.int](mailto:offlu@oie.int))**